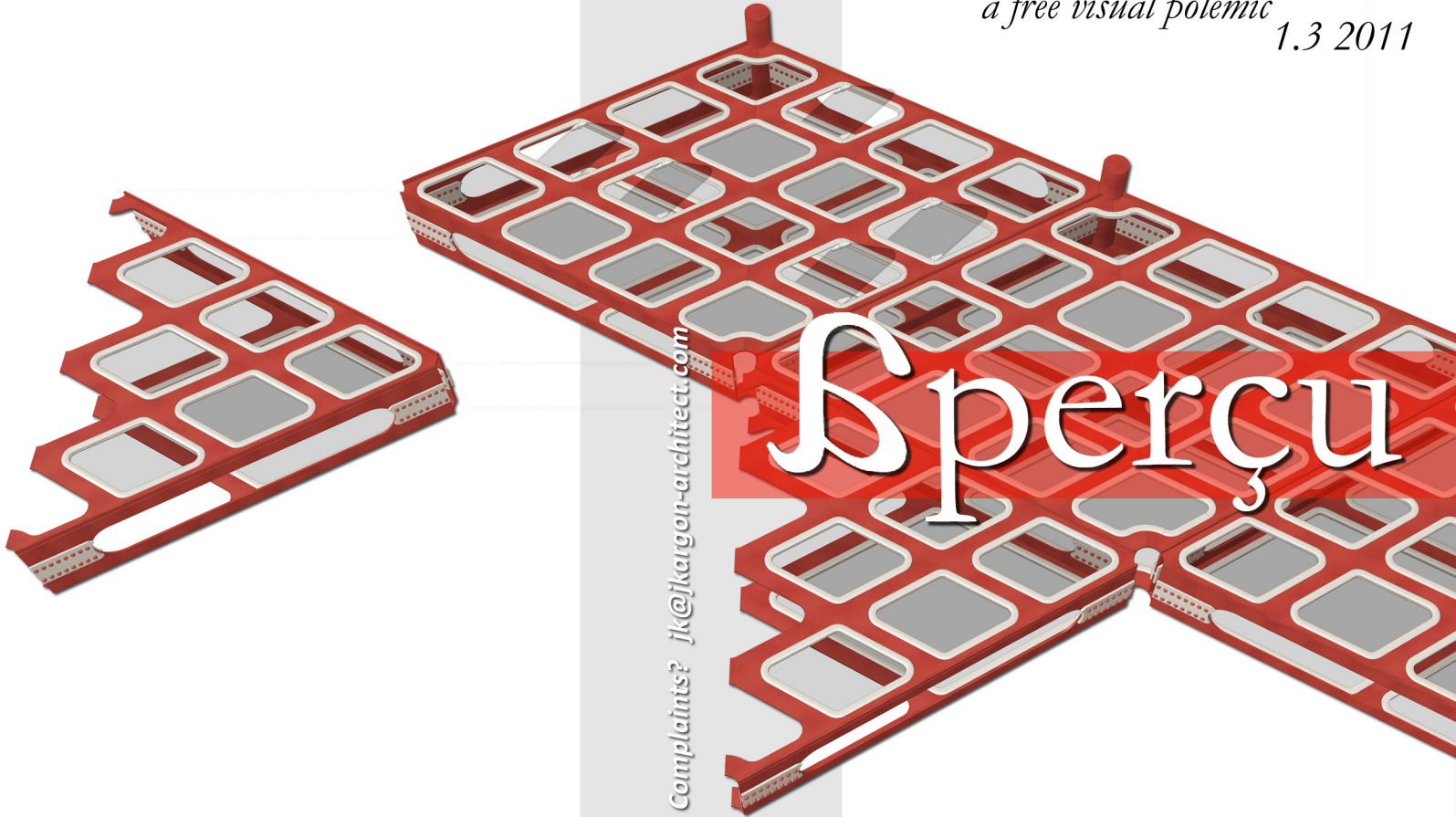


*a free visual polemic*  
1.3 2011



Complaints? [jk@jkargon-architect.com](mailto:jk@jkargon-architect.com)

# Şperçu

# RE-LIGARE INSTITUTE double-hull

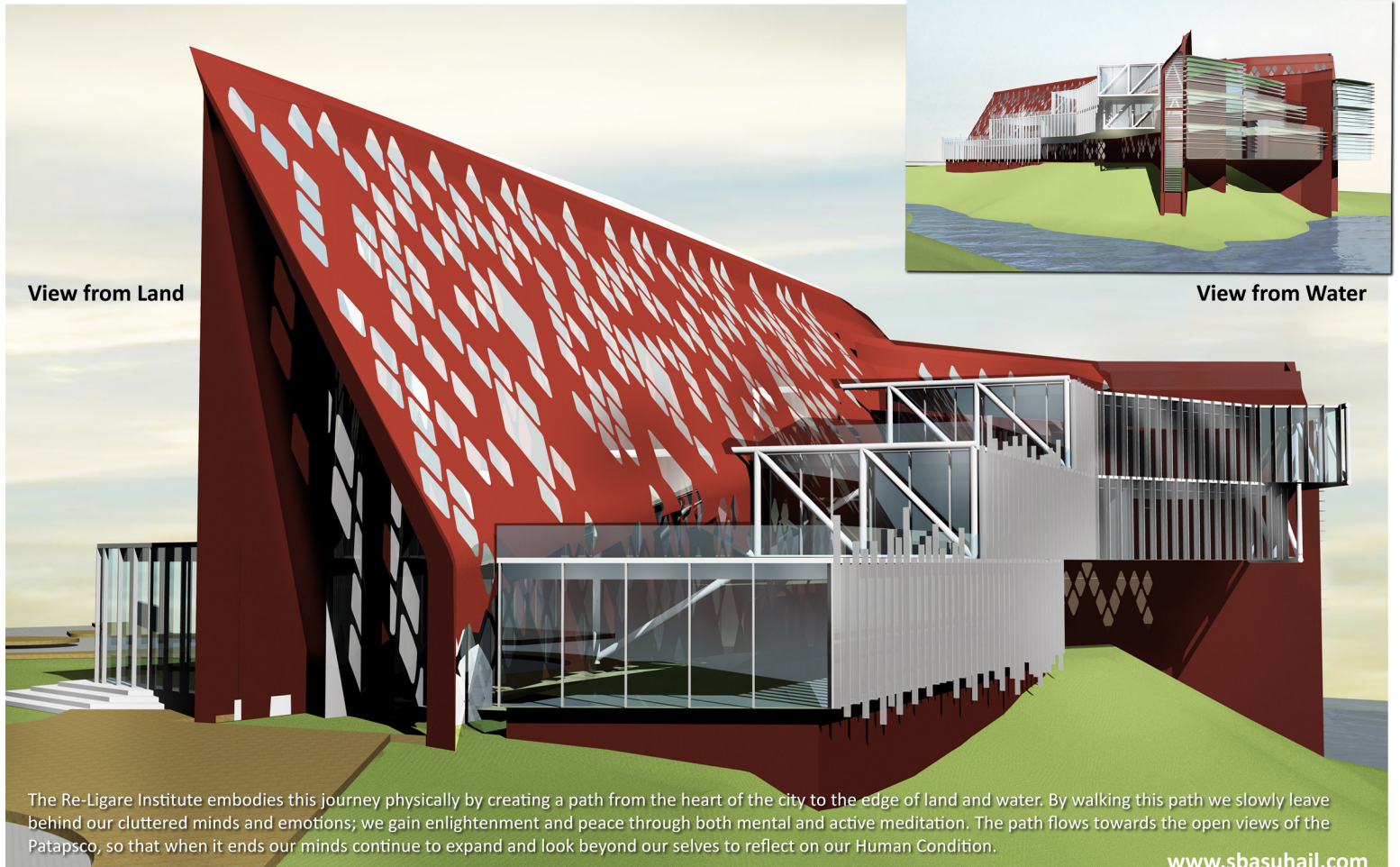
The process of reconnecting to one's authentic self is envisioned as a journey. The journey takes us from the hectic bounds of daily urban living through a process of self discovery and understanding towards a connection with the earth, the surrounding environment and our Human physical existence.

[www.sbasuhail.com](http://www.sbasuhail.com)



The Re-Ligare Institute is a facility for both mental and physical well being, through meditation and exercise.

The image features a topographic site plan on the left, showing a yellow-shaded area for the building. The plan is labeled 'WESTPORT' and 'PATAPSCO MIDDLE BRANCH'. To the right is a 3D architectural rendering of the building, which has a dark brown facade with a diamond-patterned screen and a series of green-roofed terraces. The building is situated on a green hillside overlooking a blue body of water.



**View from Land**

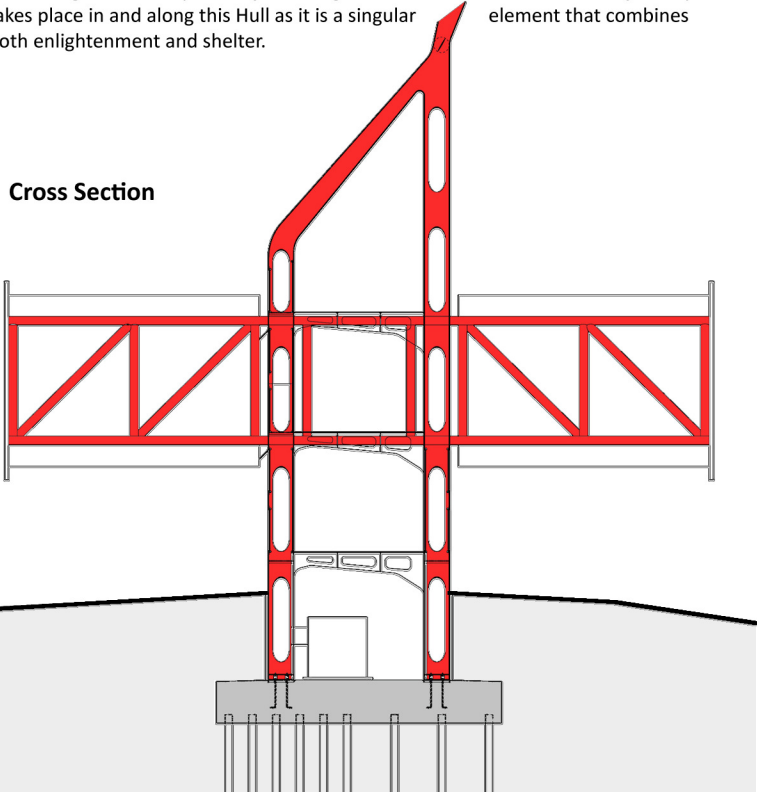
**View from Water**

The Re-Ligare Institute embodies this journey physically by creating a path from the heart of the city to the edge of land and water. By walking this path we slowly leave behind our cluttered minds and emotions; we gain enlightenment and peace through both mental and active meditation. The path flows towards the open views of the Patapsco, so that when it ends our minds continue to expand and look beyond our selves to reflect on our Human Condition.

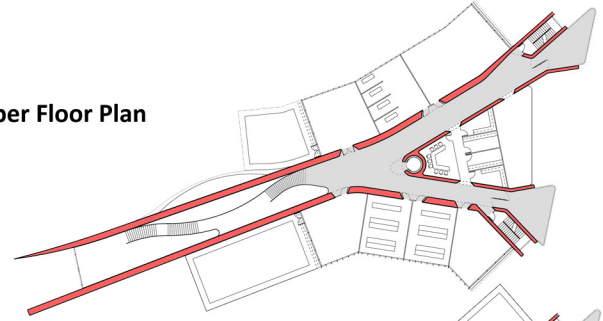
And just as this journey is a living human experience, the physical path is also a living, breathing thing. The path is designed to physically guide us towards our self discovery, and harvest the sun's light, heat, and energy, and circulate the air that we breathe. It is also the structure that carries us through this journey, so we may find comfort in its strength and its embrace.

The path is articulated as multi layered skin that forms the habitable envelope. Each layer is formed by steel plates that are punctured to facilitate breathing and seeing. The two layers are joined together to form a Double Hull. Our journey takes place in and along this Hull as it is a singular element that combines both enlightenment and shelter.

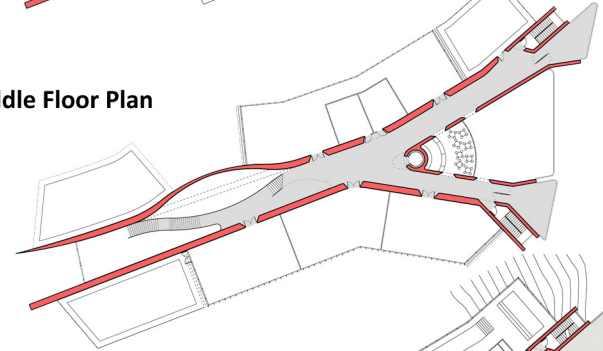
**Cross Section**



**Upper Floor Plan**



**Middle Floor Plan**



**Ground Floor Plan**

