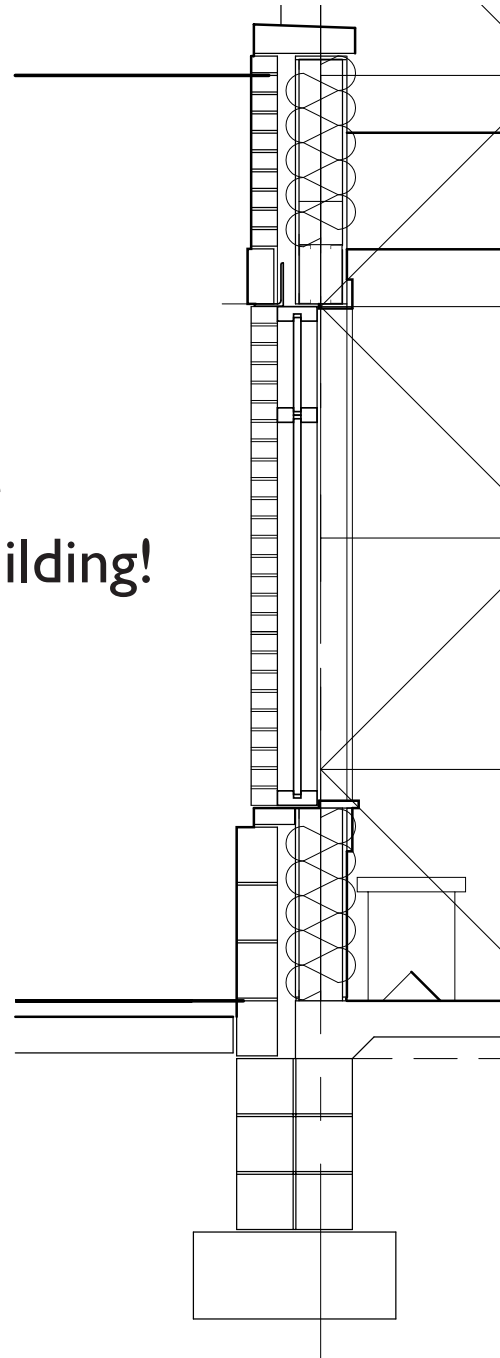




Architectural Technology V



Coursing determines the spatical rhythm of the building!



vertical coursing 3/8" mortar joint
(always one brick + one joint in the table below)

No. of courses / units	2 1/4" high	2 3/4" high	57mm high
1	0' - 2 2/3"	0' - 3 1/5"	67
2	0' - 5 1/2"	0' - 6 2/5"	133
3	0' - 8"	0' - 9 3/5"	200
4	0' - 10 2/3"	1' - 0 4/5"	267
5	1' - 1 1/3"	1' - 4"	333
6	1' - 4"	1' - 7 1/5"	400
7	1' - 6 2/3"	1' - 10 2/5"	467
8	1' - 9 1/3"	2' - 1 3/5"	533
9	2' - 0"	2' - 4 4/5"	600
10	2' - 2 2/3"	2' - 8"	667
11	2' - 5 1/3"	2' - 11 1/5"	733
12	2' - 8"	3' - 2 2/5"	800
13	2' - 10 2/3"	3' - 5 3/5"	867
14	3' - 1 1/3"	3' - 8 4/5"	933
15	3' - 4"	4' - 0"	1000
16	3' - 6 2/3"	4" - 3 1/5"	1067
17	3' - 9 1/3"	4' 6 2/5"	1133
18	4' - 0"	4' - 9 3/5"	1200
19	4' 2 2/3"	5' 0 4/5"	1267
20	4' - 5 1/3"	5' - 4"	1333
25	5' - 6 2/3"	6' - 8"	1667
50	11' - 1 1/3"	13' - 4"	3333
100	22' - 2 2/3"	26' - 8"	6667