

# MEYERHOFF YOUTH SCIENCE CENTER



*Interior Lobby*



*Construction Phase Formwork*



*Views of the Rear Elevations*



*Ceiling and Lighting Support, Interior Lobby*

THE MEYERHOFF YOUTH SCIENCE CENTER, on the Givat Ram campus of the Hebrew University, serves high school students' learning at the university level. Facilities include a lecture hall, library, classrooms, and offices.

1998 - 2000 • Schocken Assayag Architects • Jeremy Kargon, Project Architect  
Total Area: ~7000 ft<sup>2</sup> on two floors

# MINICOM CORPORATE HEADQUARTERS



May 2001

July 2001

October 2001

June 2002



View from the North West

Street Elevation  
View from the South West



Loading Dock  
West Elevation



Interior Detail  
Reception Desk



THE MINICOM BUILDING, in Jerusalem's Har Hotzvim Technology Park, includes both research and manufacturing facilities. A cafe-style employees' lunch room flanks the street entrance, while the fabrication hall opens onto adjacent, terraced gardens.

1999- 2002 • Schocken Architects • Jeremy Kargon, Project Architect  
Total Area: ~36,000 ft<sup>2</sup> office space on four floors; three parking levels.

# RAMAT RAHEL ALON SERVICE STATION



*Schematic Design Phase Computer Model*



*Construction Phase, View towards Bethlehem*

ALON SERVICE STATION, adjacent to Kibbutz Ramat Rahel south of Jerusalem, includes a cafe with a dramatic view overlooking the adjacent landscape.

1994- 2001 • Schocken Assayag Architects • Jeremy Kargon, Project Architect  
Total Area: ~1200 ft<sup>2</sup> commercial space, 4 pumping stations, toilets and storage.



# GRAPHOPRINT HA'ARETZ PRESS FACILITY



Construction Phase -- Main Bloc



Mail Room Loading Structure



Ventilation Louvers



Press Machine and Paper Track



Steel Assembly Details



THE GRAPHOPRINT PRESS FACILITY, located north of Tel Aviv, produces the Israeli edition of *The Herald Tribune*, *Ha'aretz*, and a score of local newspapers and magazines. Housing two four-color aggregate presses, and a double height heat-set press, the Press Facility was built with economical steel-and-panel construction in less than twelve months. Additional services include paper storage, plate-preparation, wastepaper treatment, administration, and extensive mail-room functions.

1996 - 1997 • Schocken Assayag Architects • Jeremy Kargon, Project Architect • Ben Posel, Assistant Architect  
Total Area: ~130,000 ft<sup>2</sup> on four floors • Main Press Hall: ~50 ft height, ~225 ft length, 36 ft width.



# HA'ARETZ PRESS EXTENSION

*Construction Phase*



*Space Frame Roof Assembly*



*Final Finish and Services*



*Curtain Wall Assembly*



HA'ARETZ PRESS EXTENSION, an addition to the recently-completed printing facility, is designed to enclose a single multi-aggregate, four-color printing press. The space-frame structure supports a four-story curtain wall, held adjacent to the interior.

2000- 2002 • Schocken Architects • Jeremy Kargon, Project Architect  
Total Area: ~12,000 ft<sup>2</sup> on three levels.

*Reel Stand Level*



*Service Crane*



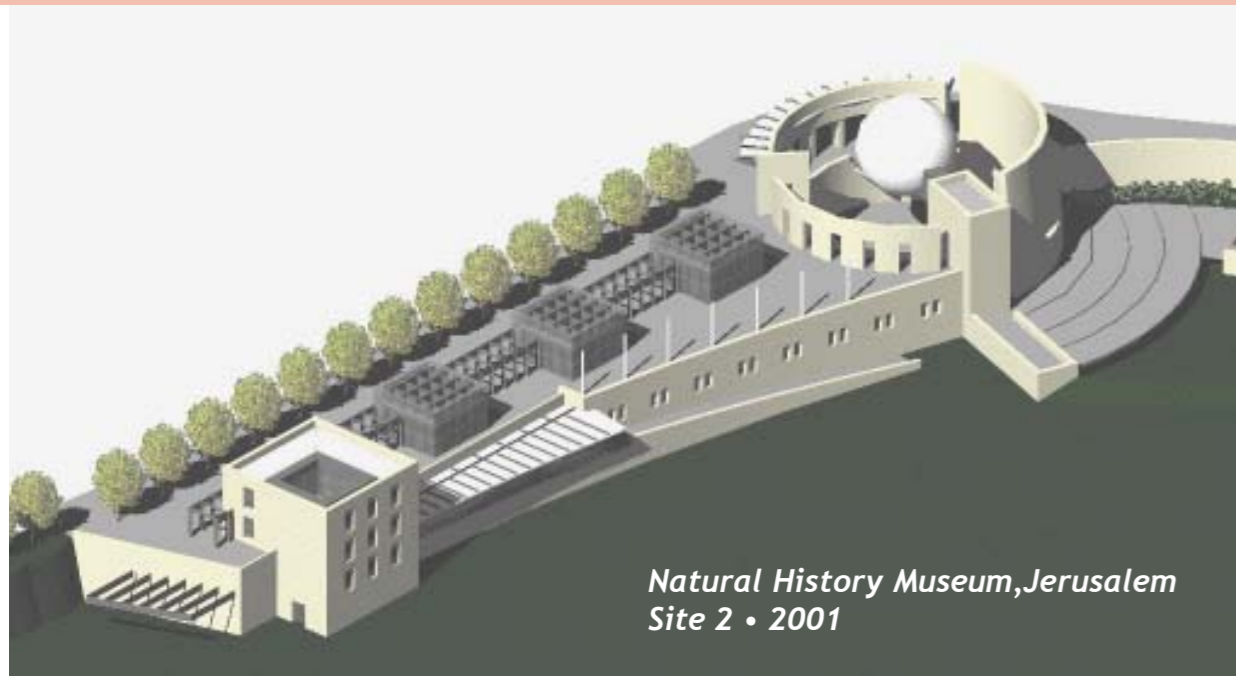
*Press Under Assembly*



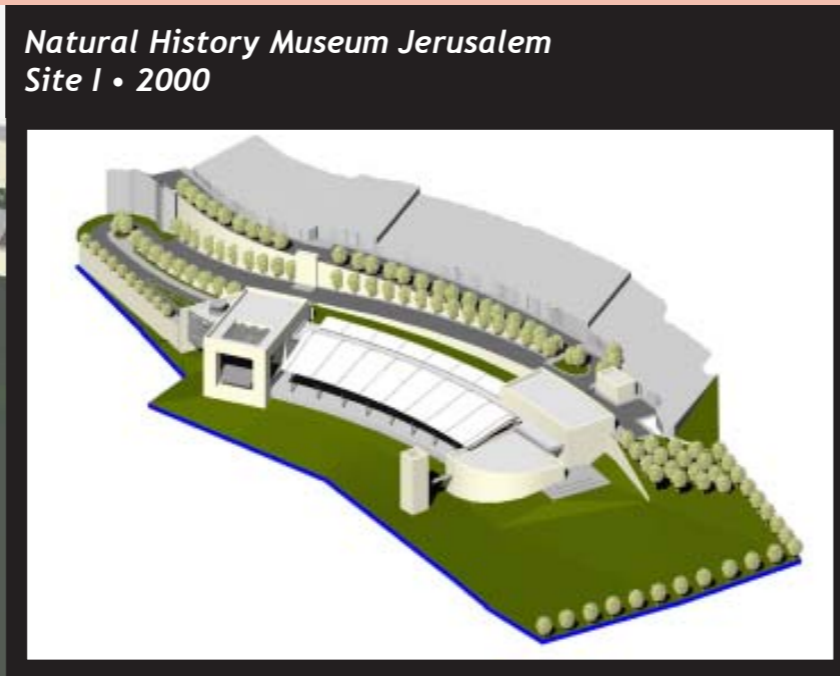
*Curtain Wall at Night*



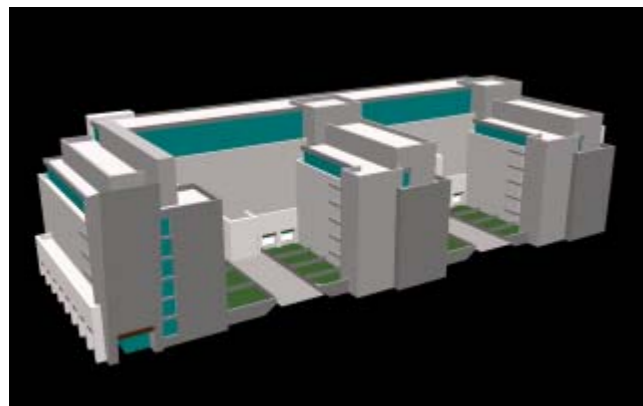
# U N B U I L T P R O J E C T S



*Natural History Museum, Jerusalem  
Site 2 • 2001*



*Natural History Museum Jerusalem  
Site 1 • 2000*



*Design Development and 3D Model  
Housing and Commercial Block  
1997*

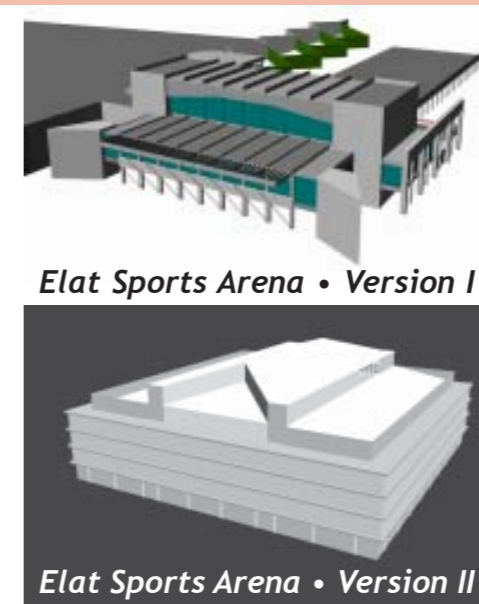
*Design Development and 3D Model  
Offices for Peretz Street, Tel Aviv*

*Efrat Beredjik, Architect  
2000*



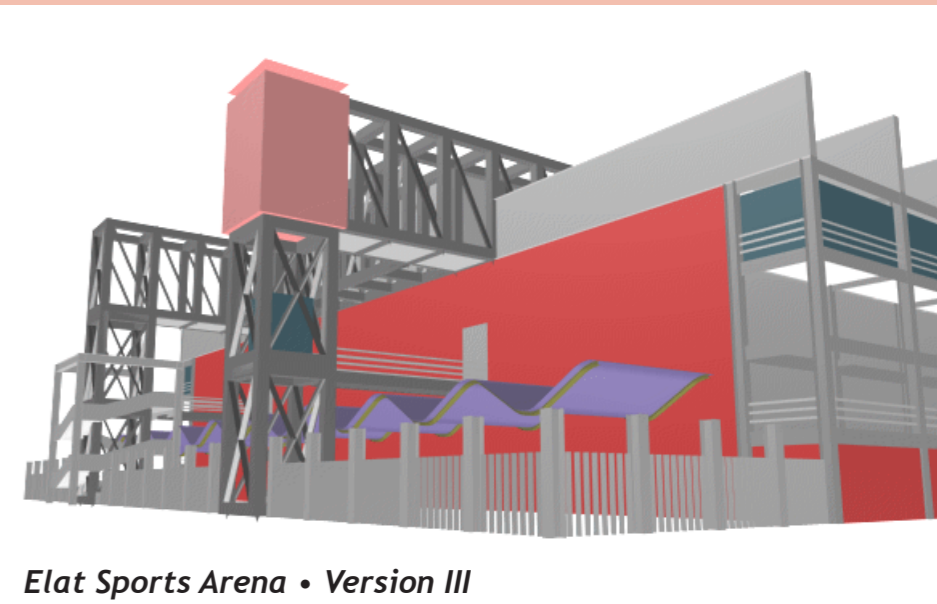
*King David Residences*

*Row House Loft Prototype*



*Elat Sports Arena • Version I*

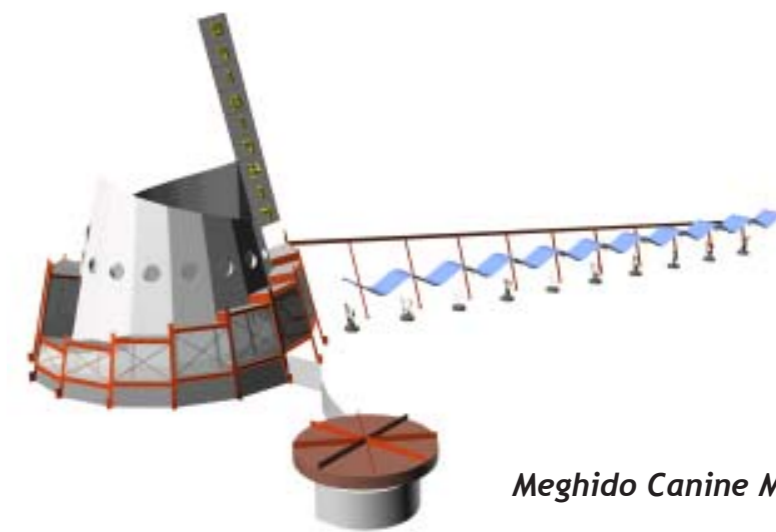
*Elat Sports Arena • Version II*



*Elat Sports Arena • Version III*



*Office / Warehouse, Netanya*



*Meghido Canine Museum*